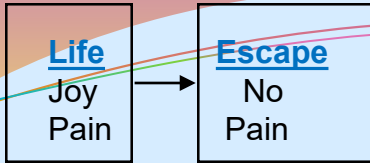
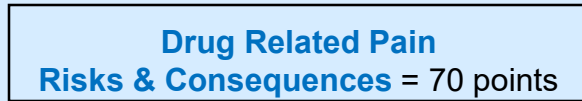


CYCLE OF ADDICTION



10 points (original pain)



Health

Mental

- Paranoia
- Loss of short term memory (inhibits acetylcholine)
- Loss of concentration
- Loss of motivation
- Triggering of psychosis (e.g.. schizophrenia)

- Personality Changes
- Mood swings
- Depression
- Anxiety

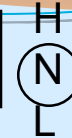
Mixing is worse

1 marijuana = 7-10 cigs.

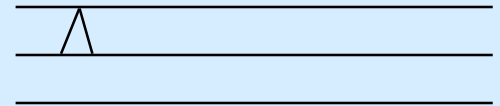
Physical

- Lungs
- Overdose
- Liver, digestive
- Kidneys
- Heart
- Brain
- Hep. B & C, HIV

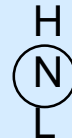
Original Pain = 10 points



1/. Experiment



2/. Social/Recreational

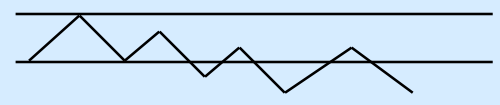
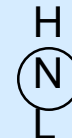


Drug use increases

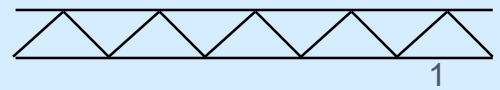
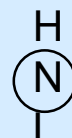
- A/. Tolerance
- B/. Need to feel good daily not just monthly

90% of drug users stop their drug use before it progresses to stages 3 or 4

3/. Harmful Dependency



4/. Addiction



Combination of Original Pain & Drug Related Pain = 80 points

Legal

Financial

Relationships

- Family
- Friends

Work/School

Spiritual (e.g., Shame)

Coping Mechanism

- Psychological dependency
- Chemical imbalances in brain (inhibits the production of serotonin, noradrenaline & dopamine)